

ISSF Prone Women

StandNr: 43

CHRISTENSEN, Kristine #355

Women

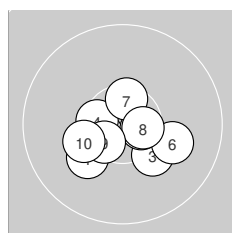
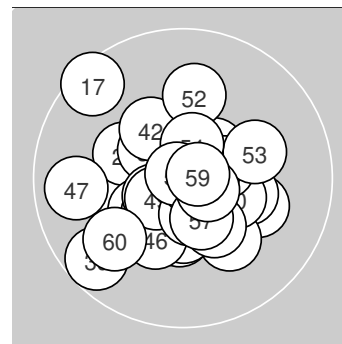
Competition

StartNr: 604

28.04.2024 11:18

DMST

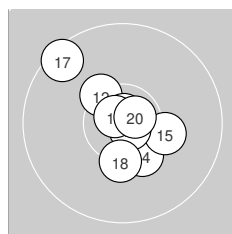
Ergebnis: **628.1** (596)
 Serien: 104.1 104.4 105.1 104.9 104.9 104.7
 Zähler: 56 4 0 0 0 0 0 0 0 0
 Innenzehner: 46
 Weitest: 1152 (17.), 1040 (39.), 947 (47.)
 beste Teiler: 67.6 (56.), 98.2 (35.), 99.6 (25.)
 Trefferlage: 0.28 mm links, 0.68 mm tief
 Streuwert: 3.20, horizontal: 3.37, vertikal: 3.02



Serie 1: 104.1 (100)

10.2 ↙	10.6* ↙	10.2 ↘	10.5* ←	10.6* →
10.1 →	10.5* ↑	10.6* →	10.5* ↗	10.3 ↖

beste Teiler: 252.0 (5.), 274.0 (8.), 303.6 (2.)
 Trefferlage: 0.20 mm links, 1.42 mm tief
 Streuwert: 3.26, horizontal: 4.01, vertikal: 2.27



Serie 2: 104.4 (99)

10.6* →	10.4* ↖	10.8* ↑	10.3* ↓	10.2 →
10.8* →	9.5 ↖	10.3* ↓	10.8* ↖	10.7* ↗

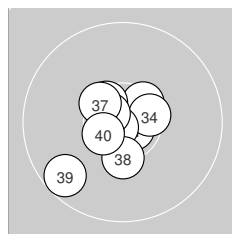
beste Teiler: 115.5 (13.), 124.9 (16.), 133.9 (19.)
 Trefferlage: 0.14 mm rechts, 0.23 mm hoch
 Streuwert: 3.76, horizontal: 3.68, vertikal: 3.83



Serie 3: 105.1 (100)

10.3 ↖	10.4* ↙	10.8* ↗	10.8* ↑	10.8* ↖
10.4* ↓	10.1 ↘	10.8* ↘	10.4* ↗	10.3* →

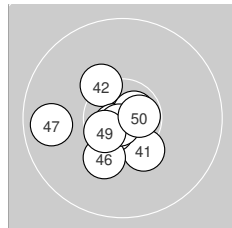
beste Teiler: 99.6 (25.), 102.9 (28.), 109.0 (24.)
 Trefferlage: 0.14 mm links, 1.34 mm tief
 Streuwert: 2.84, horizontal: 3.13, vertikal: 2.52



Serie 4: 104.9 (99)

10.7* →	10.5* ↗	10.5* ↖	10.5* →	10.8* ↙
10.7* ↖	10.5* ↖	10.4* ↓	9.7 ↗	10.6* ↙

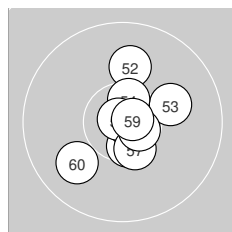
beste Teiler: 98.2 (35.), 170.0 (31.), 210.3 (36.)
 Trefferlage: 1.00 mm links, 0.52 mm tief
 Streuwert: 3.24, horizontal: 3.23, vertikal: 3.25



Serie 5: 104.9 (99)

10.3* ↓	10.3* ↖	10.7* ↙	10.8* ↙	10.7* ↗
10.2 ↙	9.8 ←	10.8* ↙	10.6* ↙	10.7* →

beste Teiler: 103.3 (48.), 141.6 (44.), 169.5 (45.)
 Trefferlage: 1.34 mm links, 1.03 mm tief
 Streuwert: 3.08, horizontal: 3.47, vertikal: 2.65



Serie 6: 104.7 (99)

10.5* ↓	10.0 ↑	10.1 →	10.6* ↑	10.8* ↘
10.9* ↖	10.5* ↓	10.6* →	10.8* →	9.9 ↙

beste Teiler: 67.6 (56.), 113.0 (55.), 136.3 (59.)
 Trefferlage: 0.83 mm rechts, 0.03 mm tief
 Streuwert: 3.36, horizontal: 3.02, vertikal: 3.67

