

# KK liegend

StandNr: 47

HARTUNG, Markus #999903923

# Herren 1/2

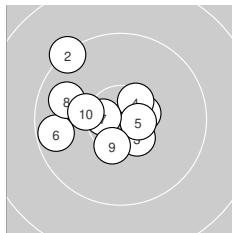
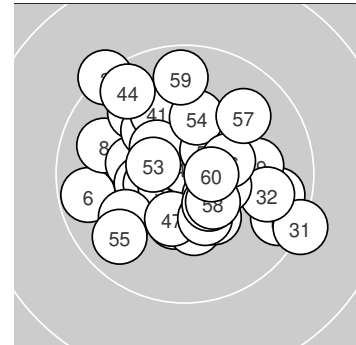
liegend Wertung

StartNr: 210

27.10.2024 13:41

Sportschützen Hubertus Kastl

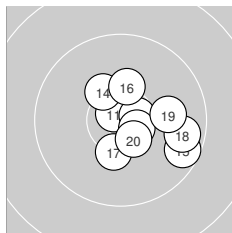
Ergebnis: **618.1** (588)  
 Serien: 102.3 102.7 104.4 102.5 103.7 102.5  
 Zähler: 48 12 0 0 0 0 0 0 0 0  
 Innenzehner: 40  
 Weitester: 1300 (31.), 1282 (2.), 1052 (15.)  
 beste Teiler: 68.6 (42.), 145.2 (24.), 146.4 (11.)  
 Trefferlage: 0.32 mm rechts, 0.37 mm hoch  
 Streuwert: 4.18, horizontal: 4.48, vertikal: 3.86



### Serie 1: 102.3 (97)

10.5* →	9.3 ↘	10.5* ↘	10.5* ↗	10.6* →
9.7 ←	10.6* ←	9.9 ↖	10.4* ↓	10.3 ←

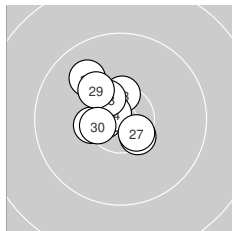
beste Teiler: 271.8 (7.), 272.6 (5.), 351.7 (1.)  
 Trefferlage: 2.47 mm links, 0.84 mm hoch  
 Streuwert: 4.59, horizontal: 5.16, vertikal: 3.92



### Serie 2: 102.7 (98)

10.8* ↘	10.6* →	10.6* ↘	10.3* ↘	9.6 ↘
10.3* ↑	10.3* ↓	9.7 →	10.0 →	10.5* ↘

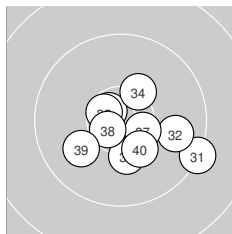
beste Teiler: 146.4 (11.), 264.1 (12.), 277.2 (13.)  
 Trefferlage: 2.94 mm rechts, 0.35 mm tief  
 Streuwert: 3.94, horizontal: 4.40, vertikal: 3.41



### Serie 3: 104.4 (99)

10.6* ←	10.4* ←	10.5* ↑	10.8* ↘	10.5* ↘
9.9 ↘	10.5* ↘	10.5* ↘	10.2 ↘	10.5* ←

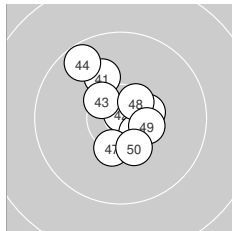
beste Teiler: 145.2 (24.), 245.4 (21.), 321.8 (27.)  
 Trefferlage: 1.71 mm links, 1.18 mm hoch  
 Streuwert: 2.91, horizontal: 2.74, vertikal: 3.07



### Serie 4: 102.5 (98)

9.3 ↘	9.9 →	10.7* ↘	10.3* ↗	10.6* ↘
10.3 ↓	10.5* ↘	10.6* ↗	10.0 ↗	10.3 ↘

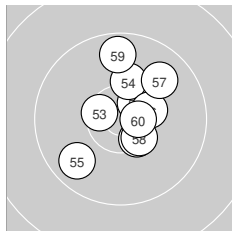
beste Teiler: 229.8 (33.), 244.8 (38.), 280.8 (35.)  
 Trefferlage: 1.78 mm rechts, 1.78 mm tief  
 Streuwert: 4.44, horizontal: 5.35, vertikal: 3.30



### Serie 5: 103.7 (99)

10.1 ↘	10.9* ↑	10.5* ↘	9.7 ↘	10.5* ↘
10.4* →	10.4* ↓	10.5* ↗	10.4* →	10.3* ↘

beste Teiler: 68.6 (42.), 335.1 (45.), 340.2 (48.)  
 Trefferlage: 0.22 mm rechts, 0.90 mm hoch  
 Streuwert: 3.85, horizontal: 3.35, vertikal: 4.29



### Serie 6: 102.5 (97)

10.5* ↘	10.5* ↗	10.5* ↖	10.2 ↑	9.8 ↗
10.4* →	9.9 ↗	10.4* ↘	9.7 ↑	10.6* →

beste Teiler: 270.0 (60.), 336.1 (52.), 339.1 (53.)  
 Trefferlage: 1.15 mm rechts, 1.41 mm hoch  
 Streuwert: 4.35, horizontal: 3.74, vertikal: 4.88

