

# KK liegend

StandNr: 44

HINZ, Philipp #999903767

# offene Klasse

liegend Wertung

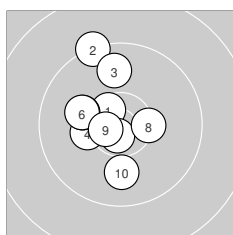
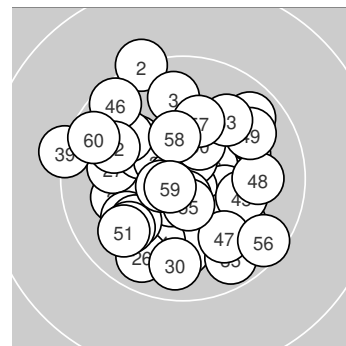
StartNr: 30

13.11.2024 17:28

SGi 1418 zu Bernau

SGi 1418 zu Bernau

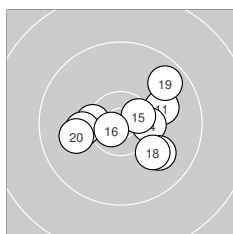
Ergebnis: **611.6** (586)  
 Serien: 102.0 102.2 102.0 103.1 100.7 101.6  
 Zähler: 46 14 0 0 0 0 0 0 0 0  
 Innenzehner: 24  
 Weitester: 1308 (39.), 1301 (2.), 1098 (56.)  
 beste Teiler: 103.5 (37.), 133.2 (38.), 165.5 (59.)  
 Trefferlage: 0.90 mm links, 0.14 mm tief  
 Streuwert: 4.80, horizontal: 5.01, vertikal: 4.58



### Serie 1: 102.0 (98)

10.6\* ↘ 9.3 ↗ 9.9 ↑  
 10.1 ↖ 10.7\* ↓ 10.4\* →  
 beste Teiler: 186.4 (7.), 253.3 (9.), 310.2 (1.)  
 Trefferlage: 2.35 mm links, 1.56 mm hoch  
 Streuwert: 4.61, horizontal: 3.37, vertikal: 5.58

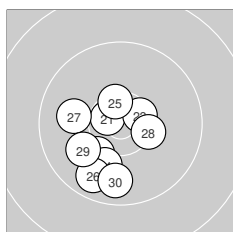
10.3 ← 10.1 ↖  
 10.6\* ← 10.0 ↓



### Serie 2: 102.2 (99)

10.1 → 10.4\* ← 10.2 ←  
 10.7\* ↖ 10.0 ↘ 10.1 ↘  
 beste Teiler: 178.9 (16.), 311.8 (15.), 452.8 (12.)  
 Trefferlage: 1.32 mm rechts, 0.28 mm tief  
 Streuwert: 4.63, horizontal: 5.63, vertikal: 3.34

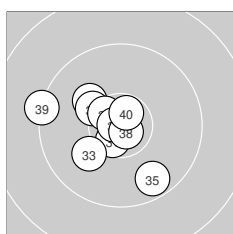
10.4\* → 10.6\* →  
 9.7 ↗ 10.0 ←



### Serie 3: 102.0 (98)

10.7\* ↖ 10.2 ↗ 10.5\* →  
 9.8 ↘ 10.0 ← 10.4\* →  
 beste Teiler: 230.3 (21.), 341.2 (23.), 365.5 (25.)  
 Trefferlage: 2.06 mm links, 2.77 mm tief  
 Streuwert: 4.16, horizontal: 3.77, vertikal: 4.51

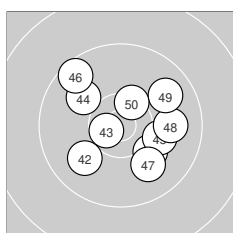
10.1 ↓ 10.5\* ↑  
 10.0 ↖ 9.8 ↓



### Serie 4: 103.1 (98)

10.6\* ↘ 10.2 ↘ 10.1 ↖  
 10.6\* ↖ 10.8\* ← 10.8\* ↘  
 beste Teiler: 103.5 (37.), 133.2 (38.), 224.6 (40.)  
 Trefferlage: 2.52 mm links, 0.27 mm tief  
 Streuwert: 4.40, horizontal: 4.81, vertikal: 3.95

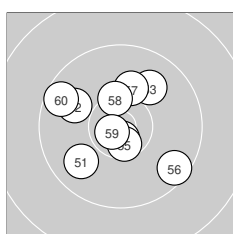
10.3\* ↖ 9.7 ↘  
 9.3 ← 10.7\* ↑



### Serie 5: 100.7 (97)

10.2 ↘ 10.0 ↗ 10.6\* ←  
 9.6 ↘ 10.0 ↘ 9.9 →  
 beste Teiler: 245.4 (43.), 412.8 (50.), 640.4 (41.)  
 Trefferlage: 1.13 mm rechts, 0.25 mm hoch  
 Streuwert: 5.44, horizontal: 5.96, vertikal: 4.86

10.0 ↖ 10.1 →  
 9.9 ↗ 10.4\* ↑



### Serie 6: 101.6 (96)

9.9 ↖ 9.9 ↖ 10.0 ↗  
 9.6 ↘ 10.2 ↑ 10.4\* ↑  
 beste Teiler: 165.5 (59.), 193.7 (54.), 290.4 (55.)  
 Trefferlage: 0.97 mm links, 0.67 mm hoch  
 Streuwert: 5.26, horizontal: 5.61, vertikal: 4.88

10.7\* ↓ 10.6\* ↓  
 10.7\* ↖ 9.6 ↖