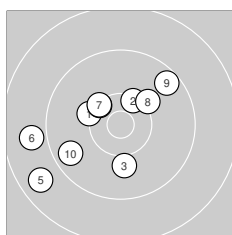
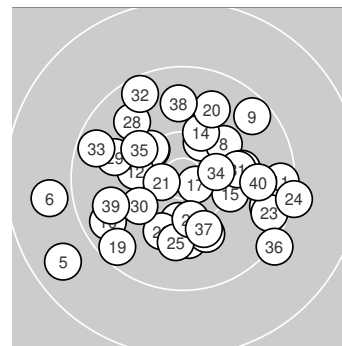
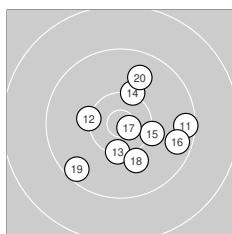


Ergebnis: **380** (395.7)  
 Serien: 94 96 96 94  
 Zähler: 22 16 2 0 0 0 0 0 0 0 0  
 Innenzehner: 3  
 Weitester: 1794 (5.), 1658 (6.), 1403 (36.)  
 beste Teiler: 171.2 (17.), 265.6 (21.), 415.7 (34.)  
 Trefferlage: 0.09 mm links, 0.50 mm tief  
 Streuwert: 6.53, horizontal: 7.49, vertikal: 5.40



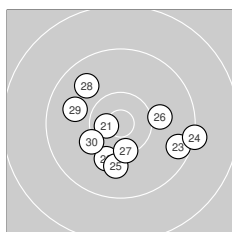
**Serie 1: 94 (97.9)**  
 10.2 ↖ 10.3 ↗ 10.0 ↓  
 8.9 ← 10.3 ↘ 10.1 ↗  
 beste Teiler: 496.9 (2.), 523.8 (4.), 537.0 (7.)  
 Trefferlage: 3.74 mm links, 0.00 mm  
 Streuwert: 7.15, horizontal: 8.16, vertikal: 5.97

10.3 ↖ 8.7 ↙  
 9.5 ↗ 9.6 ↙



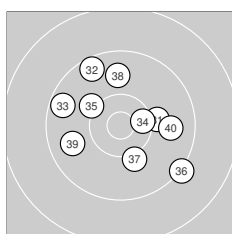
**Serie 2: 96 (99.9)**  
 9.4 → 10.2 ← 10.3 ↓  
 9.6 → 10.7\* ↘ 10.0 ↓  
 beste Teiler: 171.2 (17.), 523.8 (13.), 593.1 (12.)  
 Trefferlage: 2.39 mm rechts, 1.16 mm tief  
 Streuwert: 5.81, horizontal: 6.30, vertikal: 5.28

10.2 ↗ 10.2 →  
 9.5 ↙ 9.8 ↗



**Serie 3: 96 (99.6)**  
 10.6\* ← 10.1 ↓ 9.5 →  
 10.0 → 10.3 ↓ 9.8 ↘  
 beste Teiler: 265.6 (21.), 509.5 (27.), 632.2 (30.)  
 Trefferlage: 0.63 mm rechts, 1.91 mm tief  
 Streuwert: 6.17, horizontal: 7.46, vertikal: 4.53

9.2 → 10.0 ↓  
 9.9 ← 10.2 ↙



**Serie 4: 94 (98.3)**  
 10.1 → 9.5 ↖ 9.5 ←  
 9.2 ↘ 10.1 ↓ 9.8 ↑  
 beste Teiler: 415.7 (34.), 646.7 (35.), 672.0 (37.)  
 Trefferlage: 0.32 mm rechts, 1.05 mm hoch  
 Streuwert: 6.91, horizontal: 7.66, vertikal: 6.07

10.4\* → 10.1 ↖  
 9.8 ← 9.8 →