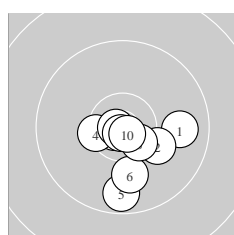
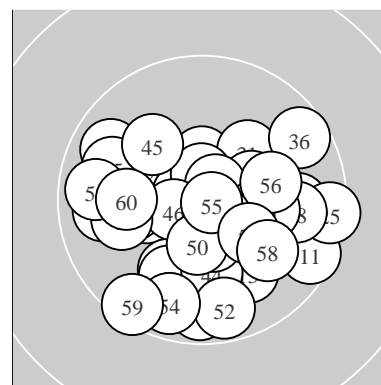
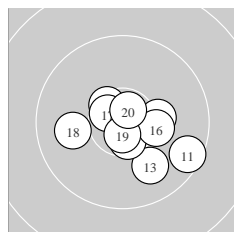


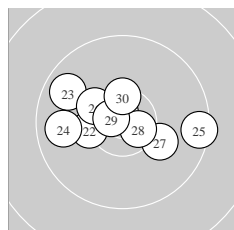
Ergebnis: **615.1** (587)
 Serien: 103.9 103.3 102.4 102.0 103.4 100.1
 Zähler: 47 13 0 0 0 0 0 0 0
 Innenzehner: 30
 weiteste: 1175 (25), 1150 (59), 1104 (11)
 beste Teiler 90.5 (55.) 94.2 (9.) 103.1 (7.)
 Trefferlage 0.26 mm rechts, 1.39 mm tief
 Streuwert 4.43, horizontal: 5.06, vertikal: 3.69



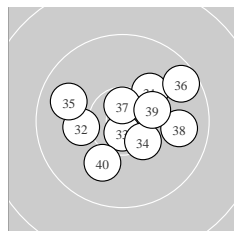
Serie 1:
 9.9 → 10.2 ↘ 10.8 * 10.4 * 9.7 ↓
 10.0 ↓ 10.8 * 10.5 * 10.8 * 10.8 *
 beste Teiler 94.2 (9.) 103.1 (7.) 123.7 (10.)
 Trefferlage 1.15 mm rechts, 2.64 mm tief
 Streuwert 3.49, horizontal: 3.63, vertikal: 3.34



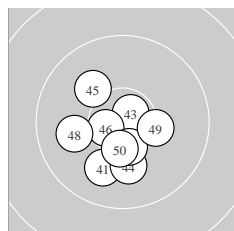
Serie 2:
 9.6 ↘ 10.5 * 10.0 ↘ 10.6 * 10.3 →
 10.3 * 10.6 * 10.0 ← 10.7 * 10.7 *
 beste Teiler 189.0 (19.) 202.6 (20.) 264.9 (17.)
 Trefferlage 1.39 mm rechts, 1.19 mm tief
 Streuwert 4.09, horizontal: 4.96, vertikal: 2.99



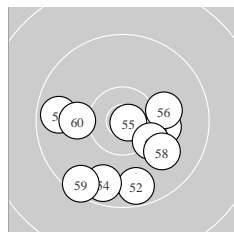
Serie 3:
 10.8 * 10.3 * 9.8 ↘ 9.8 ← 9.5 →
 10.3 * 10.1 ↘ 10.6 * 10.7 * 10.5 *
 beste Teiler 150.1 (21.) 183.4 (29.) 259.6 (28.)
 Trefferlage 0.91 mm links, 0.56 mm hoch
 Streuwert 4.83, horizontal: 6.37, vertikal: 2.49



Serie 4:
 10.2 ↗ 10.2 ← 10.7 * 10.4 * 9.9 ↘
 9.6 ↗ 10.7 * 9.9 → 10.3 * 10.1 ↓
 beste Teiler 177.0 (33.) 239.0 (37.) 437.6 (34.)
 Trefferlage 1.15 mm rechts, 0.40 mm hoch
 Streuwert 4.88, horizontal: 5.82, vertikal: 3.71



Serie 5:
 10.0 ↓ 10.7 * 10.7 * 10.1 ↓ 10.1 ↘
 10.6 * 10.5 * 10.0 ← 10.3 * 10.4 *
 beste Teiler 184.1 (43.) 235.2 (42.) 274.1 (46.)
 Trefferlage 1.18 mm links, 1.96 mm tief
 Streuwert 3.56, horizontal: 3.49, vertikal: 3.63



Serie 6:
 10.2 → 9.7 ↓ 9.7 ← 9.7 ↓ 10.8 *
 10.1 → 10.3 * 10.0 ↘ 9.5 ↓ 10.1 ←
 beste Teiler 90.5 (55.) 527.3 (57.) 621.5 (51.)
 Trefferlage 0.03 mm links, 3.51 mm tief
 Streuwert 5.37, horizontal: 6.05, vertikal: 4.61

Meyton Elektronik

ISSF Prone Men – *Wertung* – **offene Klasse**

StandNr: 46

Arlt, Sylvia #44260158

StartNr: 107

8. Januar 2020 19:20

SGi zu Lübben / SGi zu Lübben

Unterschrift des Schützen

Meyton Elektronik