

Ergebnis: **614.7** (586)

Serien: 101.7 102.4 103.9 103.2 101.4 102.1

Zähler: 46 14 0 0 0 0 0 0 0

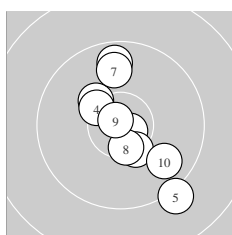
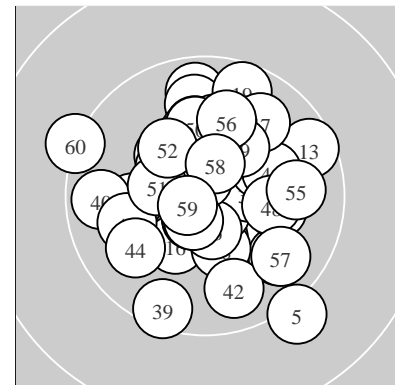
Innenzehner: 28

weiteste: 1417 (5), 1325 (60), 1139 (39)

beste Teiler 113.1 (9.) 126.5 (15.) 133.2 (33.)

Trefferlage 0.50 mm rechts, 0.66 mm hoch

Streuwert 4.56, horizontal: 4.45, vertikal: 4.68



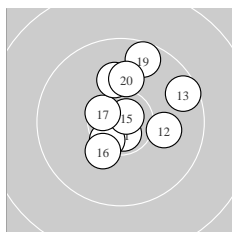
Serie 1:

10.7 *	10.3 ↘	9.7 ↑	10.4 *	9.2 ↘
10.4 *	9.9 ↑	10.5 *	10.8 *	9.8 ↘

beste Teiler 113.1 (9.) 173.2 (1.) 360.1 (8.)

Trefferlage 0.98 mm rechts, 0.07 mm hoch

Streuwert 5.44, horizontal: 4.14, vertikal: 6.49



Serie 2:

10.7 *	10.1 →	9.6 ↗	10.5 *	10.8 *
10.3 ↙	10.6 *	10.1 ↑	9.6 ↑	10.1 ↑

beste Teiler 126.5 (15.) 184.8 (11.) 317.5 (17.)

Trefferlage 1.38 mm rechts, 1.97 mm hoch

Streuwert 4.51, horizontal: 4.22, vertikal: 4.78



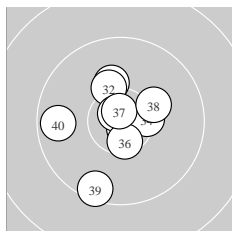
Serie 3:

10.8 *	10.1 ←	10.4 *	10.3 *	10.3 *
10.3 ↗	10.5 *	10.3 *	10.7 *	10.2 ↑

beste Teiler 140.0 (21.) 216.5 (29.) 372.8 (27.)

Trefferlage 1.52 mm rechts, 0.54 mm hoch

Streuwert 3.37, horizontal: 3.31, vertikal: 3.43



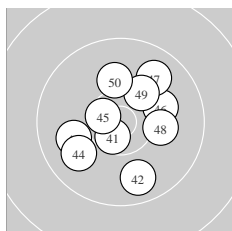
Serie 4:

10.2 ↑	10.3 ↑	10.8 *	10.4 *	10.8 *
10.5 *	10.8 *	10.2 ↗	9.5 ↙	9.7 ←

beste Teiler 133.2 (33.) 147.0 (35.) 157.5 (37.)

Trefferlage 0.76 mm links, 0.15 mm hoch

Streuwert 4.46, horizontal: 4.20, vertikal: 4.71



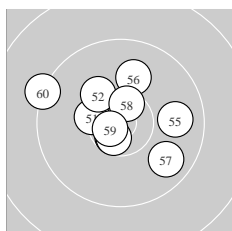
Serie 5:

10.6 *	9.8 ↘	10.0 ←	9.9 ↙	10.6 *
10.1 →	9.9 ↗	10.2 →	10.2 ↗	10.1 ↑

beste Teiler 260.4 (41.) 293.4 (45.) 563.9 (49.)

Trefferlage 0.49 mm rechts, 0.20 mm hoch

Streuwert 5.07, horizontal: 5.07, vertikal: 5.07



Serie 6:

10.4 *	10.2 ↘	10.6 *	10.6 *	9.9 →
10.0 ↑	9.8 ↘	10.6 *	10.7 *	9.3 ↘

beste Teiler 189.7 (59.) 250.2 (53.) 256.3 (54.)

Trefferlage 0.56 mm links, 1.01 mm hoch

Streuwert 5.04, horizontal: 5.94, vertikal: 3.95

Meyton Elektronik

**ISSF Prone Men** – *Wertung* – **offene Klasse**

**StartNr: 90**

StandNr: 48

8. Januar 2020 18:54

**Höftmann, Annica** #44260241

NBSG / Nord–Berliner Sch.–Gem.

---

\_\_\_\_\_  
Unterschrift des Schützen

Meyton Elektronik